

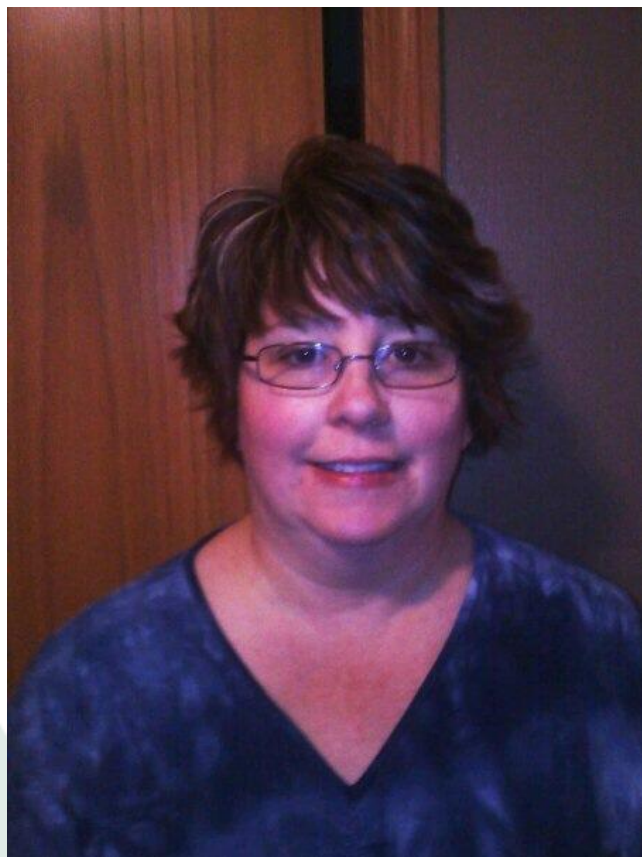
Transcending Barriers

Providing Comprehensive Sexual Assault Services in Rural Areas

August 21, 2014

This project was supported by Grant No. 2011-WR-AX-0002 awarded by the Office on Violence Against Women, U.S. Department of Justice. The opinions, findings, conclusions, and recommendations expressed in this presentation are those of the author and do not necessarily reflect the views of the Department of Justice, Office on Violence Against Women.

- **Janene Radke;**
*Executive Director of
Family Crisis Services,
Garden City, KS*



- **Jessica Haymaker;** *Rural
Sexual Assault Services
Coordinator at KCSDV,
Topeka, KS*



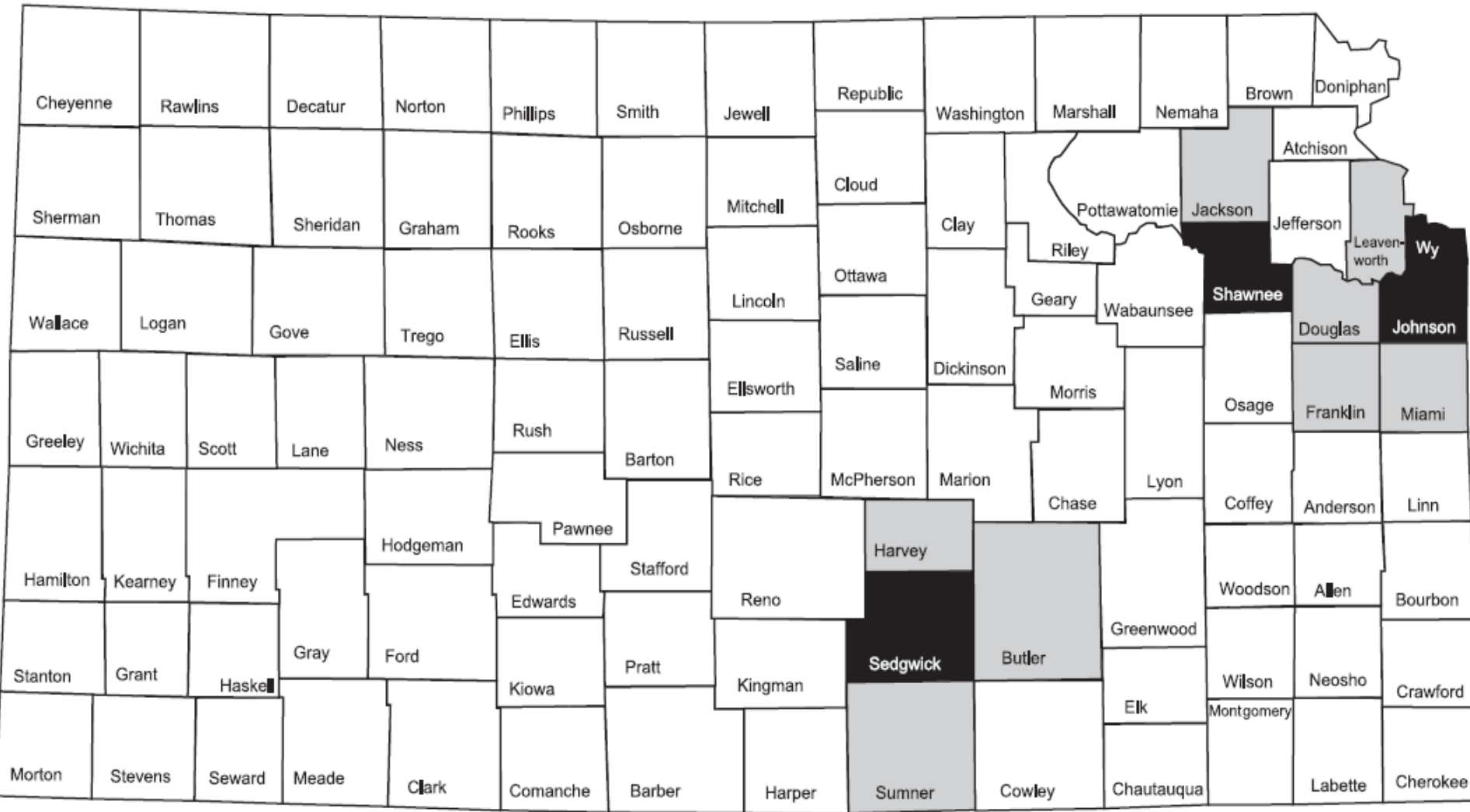
Objectives

- Come away with a better understanding of the general barriers and challenges that rural domestic and sexual violence (dual) programs face in serving sexual assault survivors.
- Leave with a general knowledge of two specific tools that can be used to evaluate and action plan around their sexual assault services.
- Gain an understanding of lessons learned through the transitional process of moving from a one-size-fits-all model to improving and creating specific and unique services for sexual assault survivors.

Sexual Violence: Issues and Solutions

- SADI
- Issue of sexual assault evidence backlog
- Statute of limitations

KANSAS COUNTIES MAP OF FULLY ELIGIBLE RURAL SERVICES



White = Fully Eligible
 Gray = Partially Eligible
 Black = Not Eligible

KBI 2009 Rural Statistics

- A 2009 Kansas Bureau of Investigation report indicated that 21 out of the 36 counties (and their law enforcement agencies) served by the four rural advocacy programs reported no rapes.

KBI's 2009 Domestic Violence, Stalking, and Rape In Kansas Report

KBI 2012 Rural statistics

Of those same 36 counties, in 2012:

- 13 rural counties reported 0 rapes
- 11 rural counties reported 1 rape

KBI's 2012 Domestic Violence, Stalking, and Rape In Kansas Report
http://www.accesskansas.org/kbi/stats/docs/pdf/2012_DV_Rape.pdf

Kansas Rural Communities

- Levels of rural communities
- Rural communities are underserved in Kansas
- Energy extraction boom
- Rural universities/community colleges
- Large farming/food production corporations

Rural Realities

- Interconnectedness
- Access to Resources
- Isolation
- Economics
- Housing

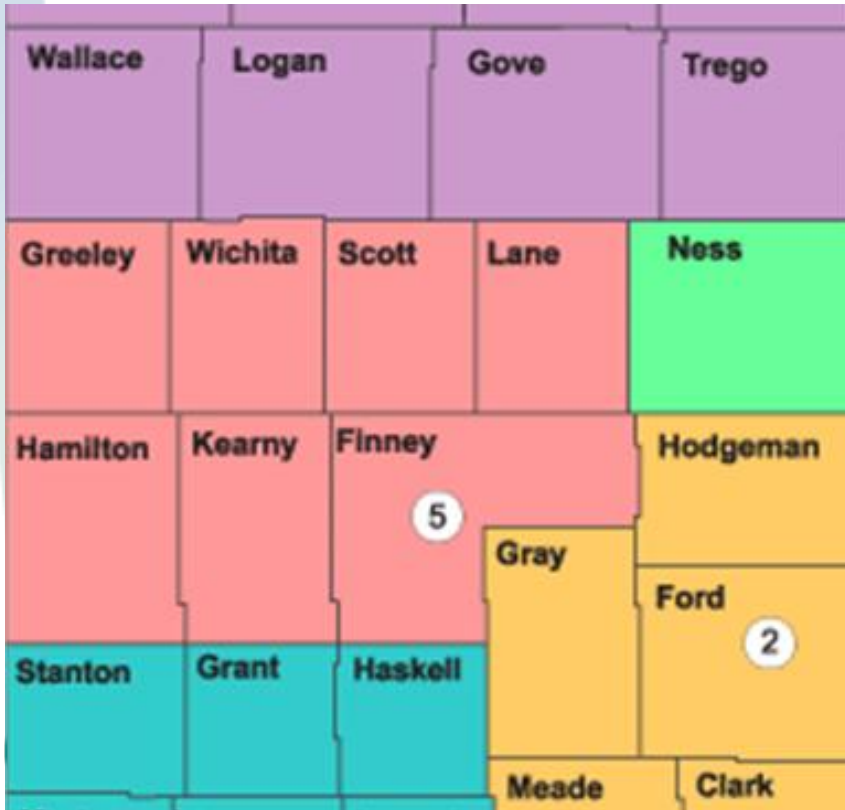
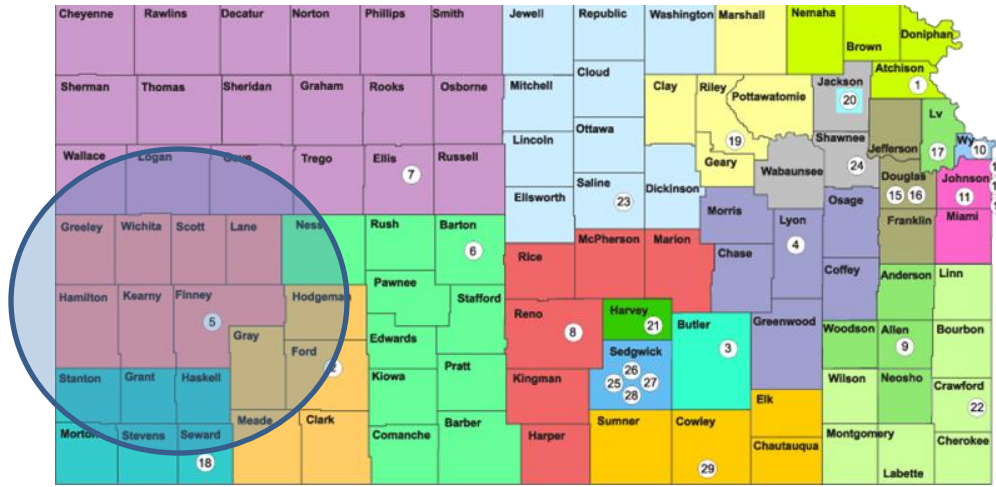
Rural Stereotype: Lack of Diversity

- LBGT community
- Refugee communities
- Immigrant communities
- Many of Kansas' reservations are located in rural areas

Rural Stereotype: This community is safe

- Safe for whom?
- “Sexual assault doesn’t happen here.”
- LEO lack of reporting to KBI
- Interconnectedness = denial
- Related to belief that SA is a mostly a stranger crime

Family Crisis Services



Family Crisis Services

- Finney, Kearny, Lane, Scott, Hamilton, Wichita, Greeley counties
- Except Finney county (FCS location), all counties hold less than 5,000 people each
- Outreach to closed communities
- Community resources

Finney County

- FCS physical location in Garden City, KS
- Garden City school district has 22 different languages spoken; 28 different languages spoken in all 7 counties
- Tyson Beef Plant located in Holcomb, KS who recruit from all different cultures/states
- Only SANE program in service area

2012 Prediction of Census	Percentage of individuals
Black or African American	2.9%
American Indian and Alaska Native	1.3%
Asian	3.8%
Native Hawaiian and Other Pacific Islander	0.1%
Two or More Races	1.5%
Hispanic or Latino	47.7%
White, not Hispanic or Latino	44.9%

Kearny County

- Farming is main industry
- Deerfield, Lakin/Kendall school districts
- Hospital in Lakin and clinic in Deerfield

2012 Prediction of Census	Percentage of individuals
Black or African American	0.8%
American Indian and Alaska Native	1.2%
Asian	0.7%
Native Hawaiian and Other Pacific Islander	0%
Two or More Races	1.5%
Hispanic or Latino	29.1%
White, not Hispanic or Latino	67.5%

Hamilton County

- Farming is the most prominent industry
- Dairy located in Syracuse, KS
- Coolidge and Syracuse are only towns in the county
- Hospital located in Syracuse
- Law Enforcement in this county have requested assistance from KBI in two SA cases and one arrest recently yet no prosecutions
- Hamilton County Sheriff was investigated for Domestic Battery & Aggravated Assault

2012 Prediction of Census	Percentage of individuals
Black or African American	0.5%
American Indian and Alaska Native	2.3%
Asian	0.3%
Native Hawaiian and Other Pacific Islander	0.2%
Two or More Races	1.2%
Hispanic or Latino	31.7%
White, not Hispanic or Latino	65.8%

Greeley County

- Furthest county from program; advocate response time up to 2 hours
- Farming is main industry
- No sexual assault cases or survivors have come from this county
- Attempted homicide-suicide occurred in Greeley

2012 Prediction of Census	Percentage of individuals
Black or African American	0.5%
American Indian and Alaska Native	0.6%
Asian	0.4%
Native Hawaiian and Other Pacific Islander	0.0%
Two or More Races	0.9%
Hispanic or Latino	14.7%
White, not Hispanic or Latino	83.5%

Scott County

- Farming and feed yards located in this county
- Regional child advocacy center located in Scott City
- Scott City and Healy are the towns located in this county
- Law enforcement from this county have been hesitant to assist victims of violence

2012 Prediction of Census	Percentage of individuals
Black or African American	0.4%
American Indian and Alaska Native	0.8%
Asian	0.6%
Native Hawaiian and Other Pacific Islander	0.1%
Two or More Races	0.8%
Hispanic or Latino	16.5%
White, not Hispanic or Latino	81.6%

Wichita County

- Farming most prominent industry
- Hog yard located in Leoti
- Marienthal is a town located in this county with no survivors or referrals ever coming from it
- Inpatient women's drug and alcohol treatment facility located in Marienthal
- Director of this D&A treatment facility has been convicted of stalking and domestic battery
- Parts of the religious communities are providing referral

2012 Prediction of Census	Percentage of individuals
Black or African American	1.1%
American Indian and Alaska Native	0.6%
Asian	0.2%
Native Hawaiian and Other Pacific Islander	Z
Two or More Races	0.9%
Hispanic or Latino	26.9%
White, not Hispanic or Latino	71.3%

Lane County

- Farming also a large industry for this county
- LEO Command: “We don’t have any domestic violence or sexual assault calls.”
- Completely different judicial district
- Two survivors in the last 5 years who were from Lane County
- Outreach materials are routinely removed from sight or discarded

2012 Prediction of Census	Percentage of individuals
Black or African American	0.7%
American Indian and Alaska Native	1.2%
Asian	0.2%
Native Hawaiian and Other Pacific Islander	0.1%
Two or More Races	2.0%
Hispanic or Latino	4.8%
White, not Hispanic or Latino	92.2%

Rapes Reported in FCS Service Area

- Finney—21 report with 6 arrests
- Greeley—1 report with 1 arrest
- Hamilton—3 reports with 1 arrest **(first year they reported to the Kansas Bureau of Investigation)**
- Kearny—2 reports with 0 arrests
- Lane—0 reports with 0 arrests
- Scott—3 reports with 1 arrest
- Wichita—0 reports with 0 arrests

KBI's 2012 Domestic Violence, Stalking, and Rape In Kansas Report
http://www.accesskansas.org/kbi/stats/docs/pdf/2012_DV_Rape.pdf

The Process

Assessment, Action Plan,
Implementation

Assessment

- RSP/NSVRC's "Personal Assessment for Advocates Working with Victims of Sexual Violence"
- RSP/NSVRC's "Organizational Assessment for Agencies Serving Victims of Sexual Violence"
- Organizational Checklist
- Sexual Assault Services Action Plan

Lessons Learned: Personal Assessment

- Eye-opening for advocates and program
- Staff was requesting additional training
- Informed the action plan
- Staff interpreted questions differently
- Confidentiality of staff
- Discussion/explanation beforehand

Lessons Learned: Organizational Assessment

- Encourage as many staff to attend as possible
- Shed light on the areas that staff most needed/wanted training
- Shed light on core vs. comprehensive services
- Agree on an interpretation of the question/prepare examples and ratings
- Effective way to examine services as well as staff personal beliefs
- Informed action plan

Action Plan

Sexual Assault Services Action Plan

ULTIMATE GOAL: *Improve advocacy services available for sexual assault survivors.*

Objective 1:

Action Step	Who Is Responsible	Timeframe	Resources Needed (Cost, Staff Time, etc. Identify if this is a budget/stipend item**)	Needs Addressed	Anticipated Outcomes	Evaluation Method
1.						
2.						
3.						
4.						
5.						
6.						
7.						
8.						

Lessons Learned: Action Planning

- Celebrations in the “small” action steps
- Each action step takes longer than you think it will
- Build upon existing strengths and services
- Can be daunting
- Forced us outside of our box
- Required research

Lessons Learned: Implementation

- Staff “buy-in” was important
- Utilize staff strengths
- Hold each other accountable
- Cost of action steps varied
- Flexible
- Action plan is adaptable
- Needed creativity in creation of services

The Big Picture

Themes

- Screening
- Trigger planning
- Long-term services
- Equal training hours
- Closed cultural communities

Groundwork

- Environment was set up to be positive
- Involving staff in the process
- Preparing for change on all levels
- Community assessment
- Utilized in-state resources

Changing Organizational Culture

- Funding
- Community
- Agency
- Programming/Services
- Advocacy

Religion & Culture

- Closed communities
- Undocumented community
- Refugee community
- Religious diversity

Vicarious Trauma

- Resistance to intrinsic evaluation
- Resistance to change
- Mitigating trauma with increase in sexual assault services provided
- Building a culture of care

Innovative Practices

- Holistic healing practices
 - Art circles training
 - Trauma-informed yoga
 - Meditation and grounding
- Communication amongst rural resources
 - D/SV Programs
 - Other community agencies
- Institutionalizing SV services
 - Policies and procedures
 - Brochures
- Weaving prevention into services
 - Community education

References

- Blecha, R.E. (2010). *A Report on Domestic Violence and Rape Statistics in Kansas*. (pp. 50-65). Retrieved from http://www.accesskansas.org/kbi/stats/docs/pdf/2009_DV_Rape.pdf
- The Housing Assistance Council. (2012). Minorities in Rural & Small Town Areas. *Rural Research Note*, April 2012, pp. 3. Retrieved from http://www.ruralhome.org/storage/research_notes/rrn-race-and-ethnicity-web.pdf
- National Sexual Assault Coalition Resource Sharing Project, National Sexual Violence Resource Center. (2010). *Personal Assessment for Advocates Working with Victims of Sexual Violence*. Retrieved from http://www.nsvrc.org/sites/default/files/Publications_Personal-Assessment.pdf
- National Sexual Assault Coalition Resource Sharing Project, National Sexual Violence Resource Center. (2010). *Organizational Assessment for Agencies Serving Victims of Sexual Violence*. Retrieved from http://www.nsvrc.org/sites/default/files/Publications_Organizational-Assessment.pdf
- Thompson, K.D. (2013). *Domestic Violence, Stalking, and Rape in Kansas*. (pp. 59-76). Retrieved from http://www.accesskansas.org/kbi/stats/docs/pdf/2012_DV_Rape.pdf
- United States Census Bureau. (2014). *State & County QuickFacts*. Retrieved from <http://quickfacts.census.gov/qfd/states/20000.html>

Questions? Comments?

Questions & Information

Kansas Coalition Against Sexual & Domestic Violence
(KCSADV)

634 S.W. Harrison

Topeka, KS 66603

785.232.9784

coalition@kcsdv.org

www.kcsdv.org

Family Crisis Services (FCS)

106 W. Fulton

Garden City, KS 67846

620.275.5911

fcs106@sbcglobal.net

www.familycrisiservices.org