

Building Partnerships to Support Survivors of Sexual Abuse in Detention

**National Sexual Assault Conference
August 22, 2019 / Philadelphia, PA**

Special Thanks

These projects are supported by grants awarded by the Office for Victims of Crime, U.S. Department of Justice.

The opinions, findings, conclusions, and recommendations expressed herein are those of the presenters and do not necessarily reflect the views of the Department of Justice, Office for Victims of Crime.



Providing quality behavioral
health care that offers
**Recovery
& Hope**



INCARCERATED SURVIVORS OF SEXUAL ABUSE

Mountain Comprehensive Care Center
606-886-8572 | www.mtcomp.org



Mountain Comprehensive Care Center

- Outpatient Health and Mental Health Clinics
- Inpatient and Outpatient Substance Use Treatment
- Therapeutic Rehabilitation Program
- Therapeutic Foster Care
- Sexual Assault Coalition Partner

Mountain Comprehensive Care Center
606-886-8572 | www.mtcomp.org



DETENTION CENTERS

- Big Sandy Regional Detention Center
 - 150 bed
 - Serves 4 counties
- Floyd County Detention Center
 - 90 bed
 - Single County

PROGRAM ACTIVITIES

- Program and Detention Center Staff Training
- Inmate Intake & Comprehensive Ongoing Inmate Education
- Victim Advocacy
- Forensic Medical Examination
- Group Cognitive Behavioral Therapy Sessions
- Community Transition & Support



CHALLENGES

- Different levels of baseline PREA compliance at detention centers
- Detention center facilities
- Inmate PREA Awareness
- Sexual Assault Nurse Examiner Training
- Governor's certification of detention facilities

Mountain Comprehensive Care Center
606-886-8572 | www.mtcomp.org



ACCOMPLISHMENTS & LEARNINGS

- Served Over 200 Sexual Abuse Survivors
- Engage and build allies at multiple levels
- Continue to ask

Mountain Comprehensive Care Center
606-886-8572 | www.mtcomp.org



Providing quality behavioral health care that offers
Recovery & Hope

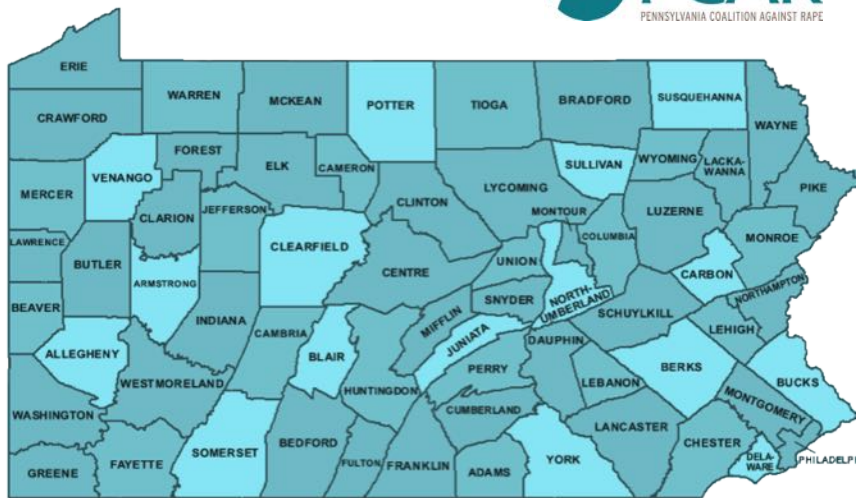


INCARCERATED SURVIVORS OF SEXUAL ABUSE

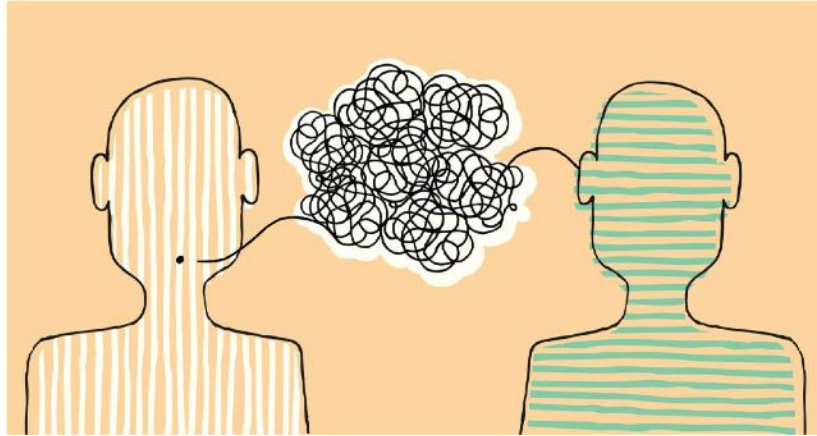
Matthew Hale RN, SANE
606-789-1228

matthew.hale@mtcomp.org

Mountain Comprehensive Care Center
606-886-8572 | www.mtcomp.org



The Problem



The Solution



Challenges



Lessons Learned



Main Accomplishments



JUST DETENTION 
INTERNATIONAL
RAPE IS NOT PART OF THE PENALTY

An Inside Line: *A Statewide Crisis Line in Michigan*

Nicole de la Torre
Just Detention International

Hotlines Services and PREA

§ 115.53 Inmate access to outside confidential support services. (a) The facility shall provide inmates with access to outside victim advocates for emotional support services related to sexual abuse by giving inmates mailing addresses and telephone numbers, including toll-free hotline numbers where available.

Emotional Support Hotline for Incarcerated Survivors

AN INSIDE LINE

If you or someone you care about on the outside has been sexually abused or sexually harassed, you can get help over the phone. All calls are confidential, anonymous, unmonitored, and free of charge.

ANONYMOUS PIN 12348861492

Call to get help for yourself, a family member, or a peer.

LÍNEA DE APOYO

Si usted o un conocido suyo en el exterior ha sufrido abuso o acoso sexual, puede obtener ayuda por teléfono. Todas las llamadas son confidenciales, anónimas, no monitoreadas y gratuitas.

PIN ANÓNIMO 12348861492

Llame para obtener ayuda para usted, para miembro de su familia o un compañero.

(800) 886-1492

JUST DETENTION
INTERNATIONAL
RAPE IS NOT PART OF THE PENALTY



Hotline Highlights

- Free
- Unmonitored
- Unrecorded
- Anonymous
- Confidential
- Monday-Friday,
11am-9pm local
time



Photo: Drew Scofield



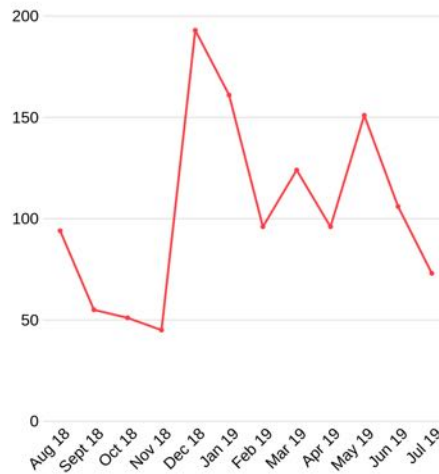
First Year's Impact

**August 2018-
July 2019**

- 1,271 calls
- 101 callers
- 33 anonymous
callers
- 26 facilities

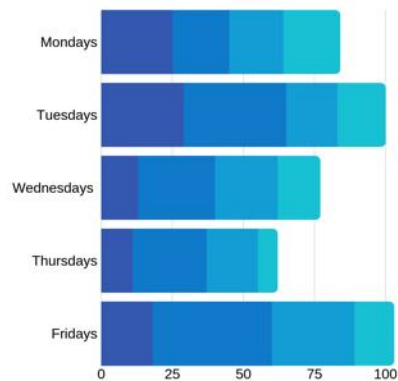


Call Volume in the First Year

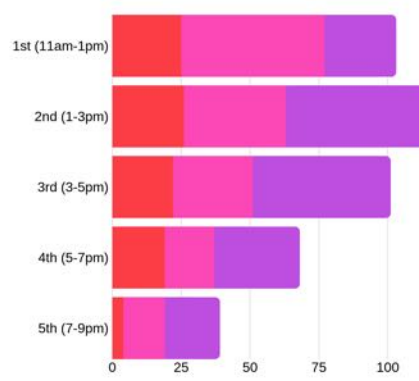


When is the line the busiest?

Call Totals per Day



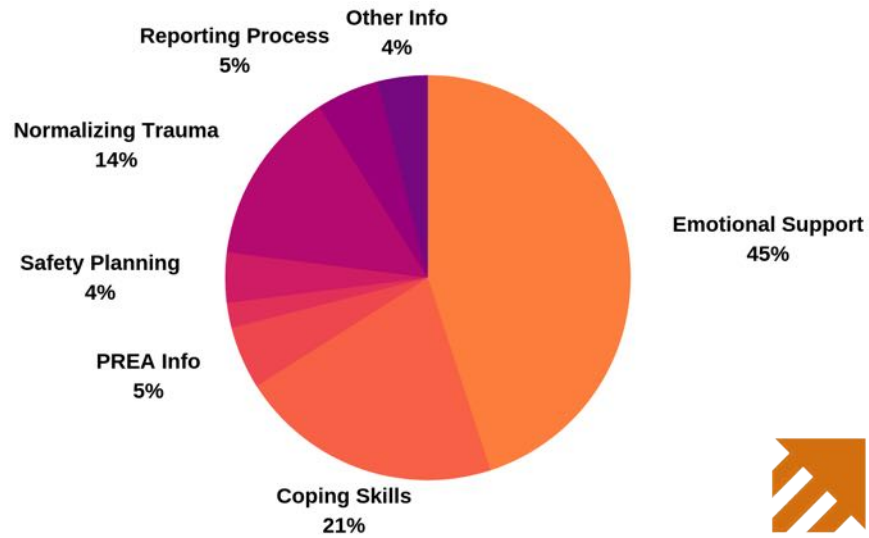
Call Totals per Shift



Call Data from April-July 2019



Reasons for Calling



Challenges and Successes

- Confidentiality
- Off-Topic Callers
- Frequent Callers
- Advocacy Requests
- Communication with Partners



Photo: Just Detention International

Giving Survivors an Inside Line

An *Inside Line* is a "God-send" and "no matter what I say about my feelings and how I process them, you always talk to me with a listening ear and an open heart. You make me feel welcomed and safe when I call. I don't need to hide my emotions when I speak with all the people on the line."



Brian, an *Inside Line* caller



CALCASA
CALIFORNIA COALITION
AGAINST SEXUAL ASSAULT

NSAC 2019

BRIDGE

Building Refuge for Immigrant Detainees through Governance and Engagement



CALCASA
CALIFORNIA COALITION
AGAINST SEXUAL ASSAULT

MODEL – Developed in 2016

Developed from work occurring in California with Prisons

BRIDGE

- Intentional about working with immigration detention
- Identified three distinct service areas
- Detention Facilities
 - Capacity
 - Geographic Area
 - Public/Private
- Rape Crisis Centers
 - Sure Helpline
 - San Bernardino Sexual Assault Services
 - Alliance

CALCASA
CALIFORNIA COALITION
AGAINST SEXUAL ASSAULT

MODEL

Partnership

- State Coalition
 - CALCASA
- Rape Crisis Center(s)
 - Sure Helpline
 - San Bernardino Sexual Assault Services
 - Alliance Against Family Violence and Sexual Assault
- Immigration Detention Facilities
 - Imperial Regional Detention Facility - located in El Centro, CA, very near the California/Mexico border.
 - Mesa Verde Detention Facility - remote locations with sizable, local immigrant communities
 - Adelanto Detention Facility - remote locations with sizable, local immigrant communities

CALCASA
CALIFORNIA COALITION
AGAINST SEXUAL ASSAULT

PARADIGM SHIFT

- Partnership
- Community Coordinated Response Team (CCRT)
- Respect & Understanding of one another's roles



CALCASA
CALIFORNIA COALITION
AGAINST SEXUAL ASSAULT

SUCCESSES



Advocacy group partners with detention facility

Imperial Regional Detention Facility members who routinely connect loved ones to legal aid services.

Imperial Regional Detention Facility members who routinely connect loved ones to legal aid services.

Imperial Regional Detention Facility members who routinely connect loved ones to legal aid services.



Thank You!

Stacy Phillips, MSW, DSW, Office for Victims of Crime
(202) 598-6890 / Stacy.Phillips2@usdoj.gov

Matthew Hale RN, SANE, Mountain Comprehensive Care Center
(606) 789-1228 / matthew.hale@mtcomp.org

Tatiana Piper, Pennsylvania Coalition Against Rape
(717) 728-9740 / tpiper@pcar.org

Nicole de la Torre, Just Detention International
(202) 506-3333 / ndelatorre@justdetention.org

Sandra Henriquez, California Coalition Against Sexual Assault
(916) 446-2520 / sandra@calcasa.org